



Centurion Technologies

Advance License Discreteness

Updated 11/17/2011

Technical Support Available

Monday to Friday hours: 8:30AM until 5:30PM CST/CDT

1-844-265-6055

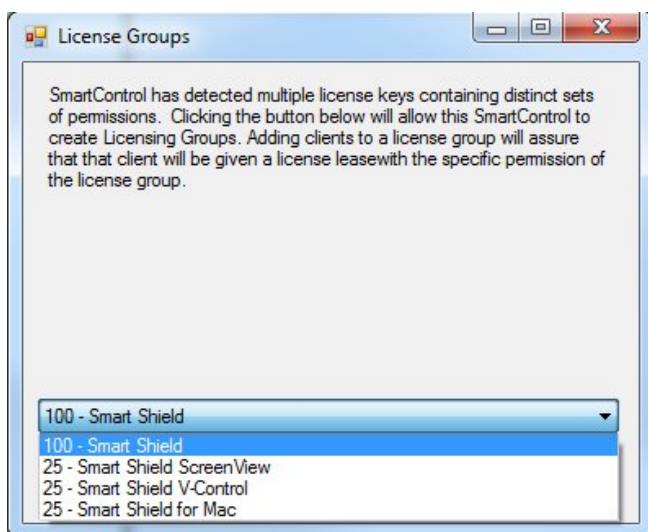
support@centuriontech.com

Introduction

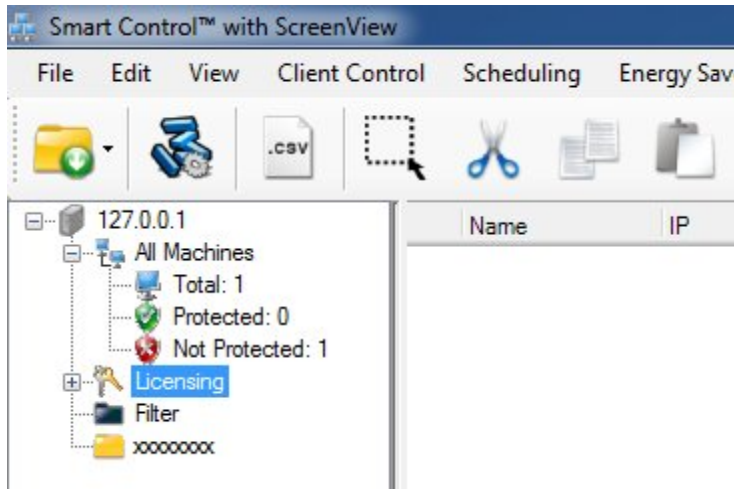
As we continue to add features to the Smart Shield and Smart Control Products, we have found that some customers have a requirement to limit some features on a set of machines, while allowing said feature on others. For example, an organization may only allow desktop monitoring on public access computers. Controlling licensing at this granular level previously required the client to license with a standalone key or a separate Smart Control. Standalone licensing can be restrictive and may not be suited for all environments. In order to give administrators the flexibility of Smart Control Managed Licensing and control over the clients features, we have created Advance License Discreteness. With Advance License Discreteness, the Smart Control exposes license groups to the administrator allowing him/her to organize machines into the license group that work with the specific set of permissions required for that client. Once the client is added to a group it will be assigned a license with that group's feature set on every license request. Advance License Discreteness does require that one of the license types be set as the default license type. The default license type is assigned to clients that are not specifically added to a license group.

Setting up Advance License Discreteness is no more complicated than a normal installation. When the Smart Control detects that the client licenses have different license types the License Group form pops up.

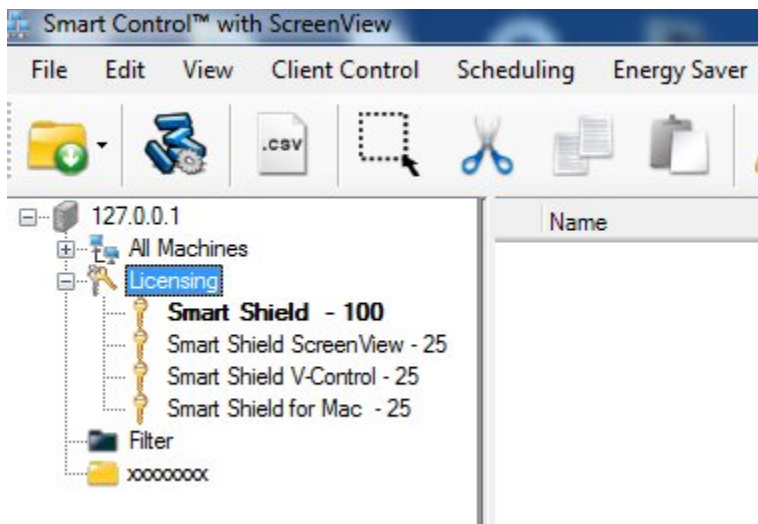
Using the drop down list, select the group that will be the default license type.



After selecting the default license type you will be prompted to restart the Smart Control panel. When the panel reconnects, the tree panel on the left side will include a new set of nodes called “Licensing”.



For each type of license there will be a key icon with a description of the features for that license type. These nodes are used just like groups. Add machines to a license group by dragging and dropping or cutting and pasting the machines into the group.



Once the machine is assigned to a group it will request that specific license type on all subsequent license requests. It is a good idea to reboot immediately so that the client can request a new license. The license group in bold, is the default group. To change the default group, right click the “License” node and the License Group form will appear.

844.265.6055
support@centuriontech.com